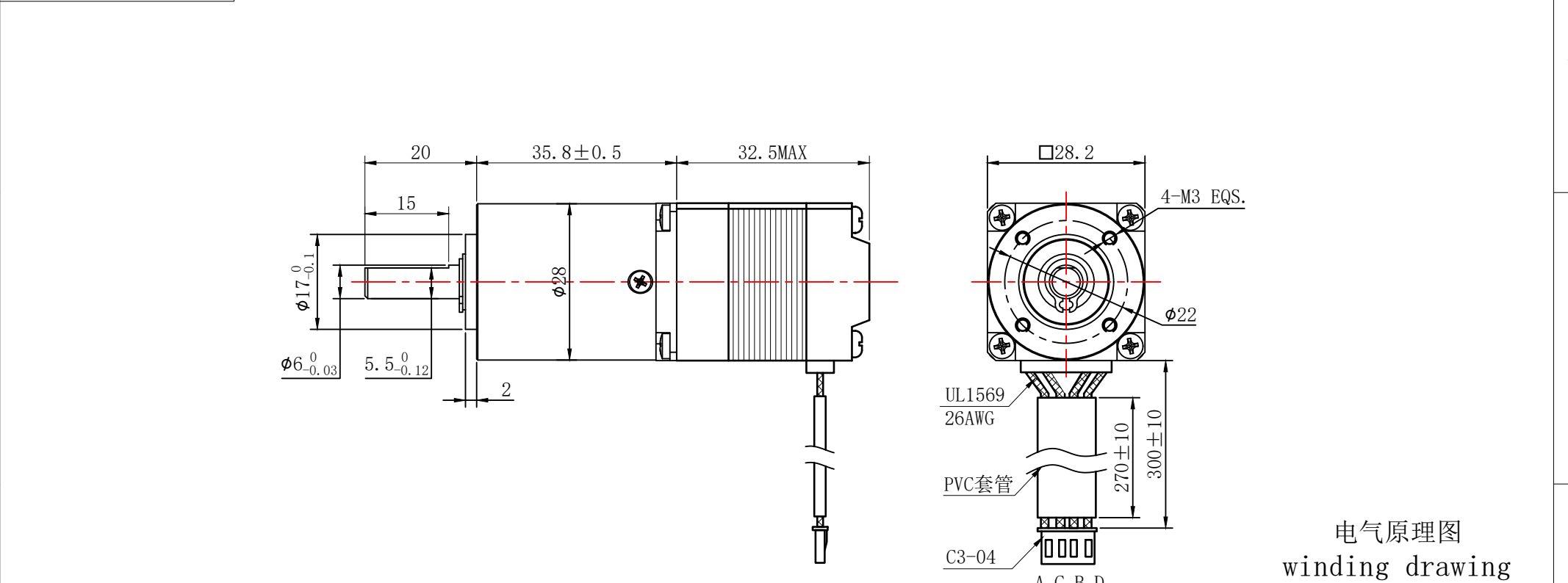


符合RoHS指令要求

CONFORM TO RoHS DNSTROCTIONS



特性 character	规格 specifications
1. 相数 Number of phase	2
2. 步 距 角 Step Angle	1.8°
3. 额定电压 Rated Voltage	DC 3.88V
4. 额定电流 Rated current	DC 0.67A
5. 保持转矩 Holding Torque	≥ 70mN.m
6. 相电阻 Winding resistance	5.8 $\pm$ 10% ohm(20℃)
7. 相电感 Winding inductaoce	4.2 $\pm$ 20% mH (1kHz)
8. 转向 (轴伸向看) Directlon of rotation	A-AB-B-CW
9. 转动惯量 Rotor Inertia	15 g.cm <sup>2</sup>
10. 电机重量 Weight	0.2Kg
11. 绝缘等级 Insulation class	B Class

减速比：1:36

电气原理图  
winding drawing

Winding diagram showing motor terminals A, B, C, D and their connections.

Terminal Labels: A (BLK), C (GRN), B (RED), D (BLU).

特性 character				规格 specifications				视图 view		比例 inverse proportion		重庆优摩特科技有限公司 Chongqing UMot technology Co.Ltd.	
1. 相数 Number of phase				2				1: 1		A0		型号 Model	
2. 步 距 角 Step Angle				1.8°				1: 1		A0		28HS2401-28PG36JZS-300	
3. 额定电压 Rated Voltage				DC 3.88V				1: 1		A0		28HS2401-28PG36JZS-300	
4. 额定电流 Rated current				DC 0.67A				1: 1		A0		28HS2401-28PG36JZS-300	
5. 保持转矩 Holding Torque				≥ 70mN.m				1: 1		A0		28HS2401-28PG36JZS-300	
6. 相电阻 Winding resistance				5.8 $\pm$ 10% ohm(20℃)				1: 1		A0		28HS2401-28PG36JZS-300	
7. 相电感 Winding inductaoce				4.2 $\pm$ 20% mH (1kHz)				1: 1		A0		28HS2401-28PG36JZS-300	
8. 转向 (轴伸向看) Directlon of rotation				A-AB-B-CW				1: 1		A0		28HS2401-28PG36JZS-300	
9. 转动惯量 Rotor Inertia				15 g.cm <sup>2</sup>				1: 1		A0		28HS2401-28PG36JZS-300	
10. 电机重量 Weight				0.2Kg				1: 1		A0		28HS2401-28PG36JZS-300	
11. 绝缘等级 Insulation class				B Class				1: 1		A0		28HS2401-28PG36JZS-300	

1	2	3	4	5	6
---	---	---	---	---	---